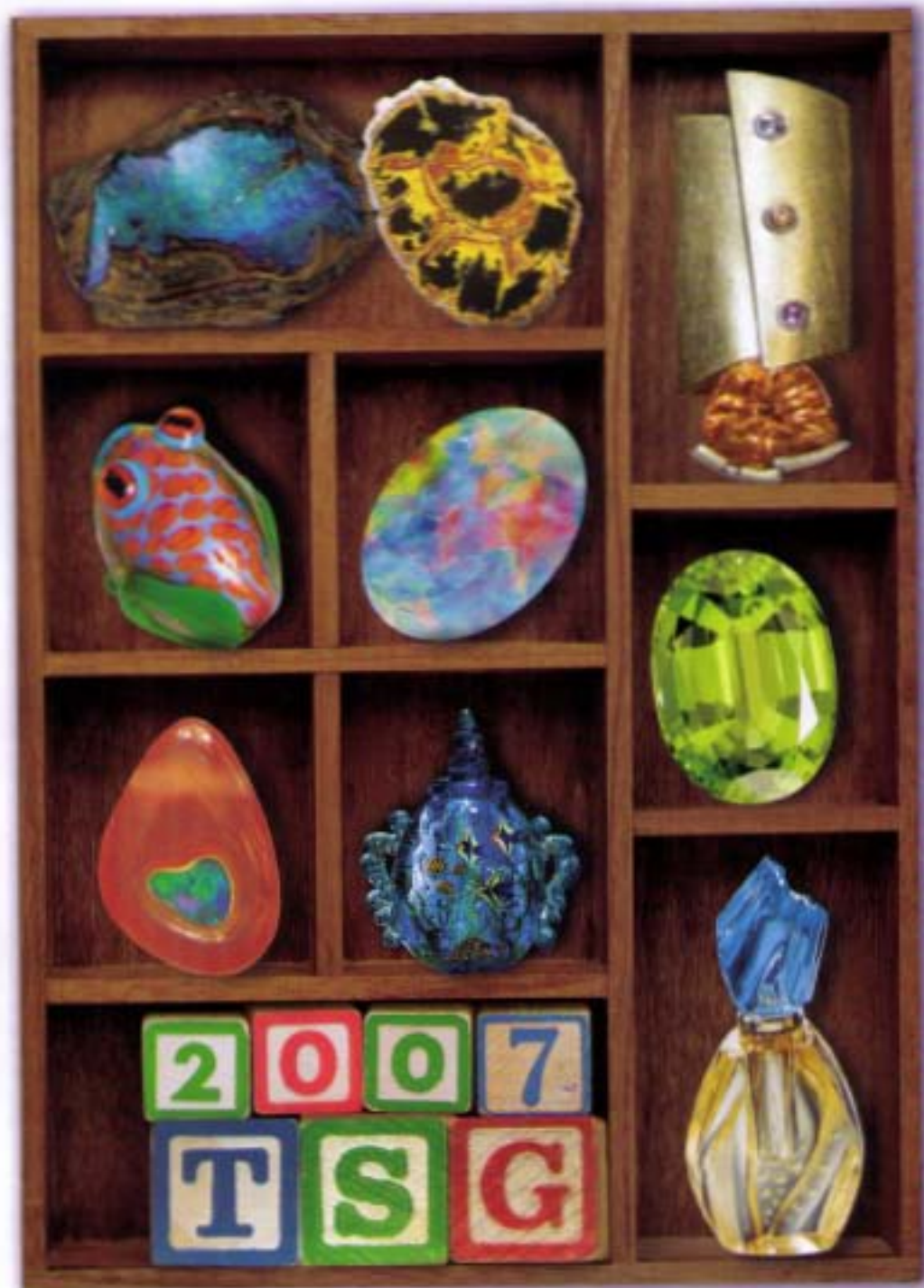


colored stone

TUCSON SHOW GUIDE

January 26 - February 12



a supplement to *Colored Stone*

2007 Exhibitor Lists

colored stone

TUCSON SHOW GUIDE

Shows & Exhibitors

- 131* Shows & Exhibitors
- 132 Map of Show Locations
- 136 Shuttles
- 138 Show Dates
- 259* Find the Exhibitor Index

Extras

- 291* Tucson Datebook
- 312 Gemmys Winners
- 339* Tucson Notebook
- 342 Australian Minerals:
A Labor of Love
- 467 Dining in Tucson

Product & Dealer Listings

- 355* Indexes
- 356 Products & Services
- 419* Dealers
- 451* Geographical Locations
of Dealers

Advertising Sections

- 320* Bead Row
- 481 Idar-Oberstein Spotlight
- 492 Marketplace
- 494 Classifieds
- 496 Advertisers' Index
- 498 Web Site Directory

*Indicates that a card has been placed before this page to help you locate this section.



Get the latest show updates (and more!) at www.tucsonshowguide.com now, and information on next year's shows coming this summer.



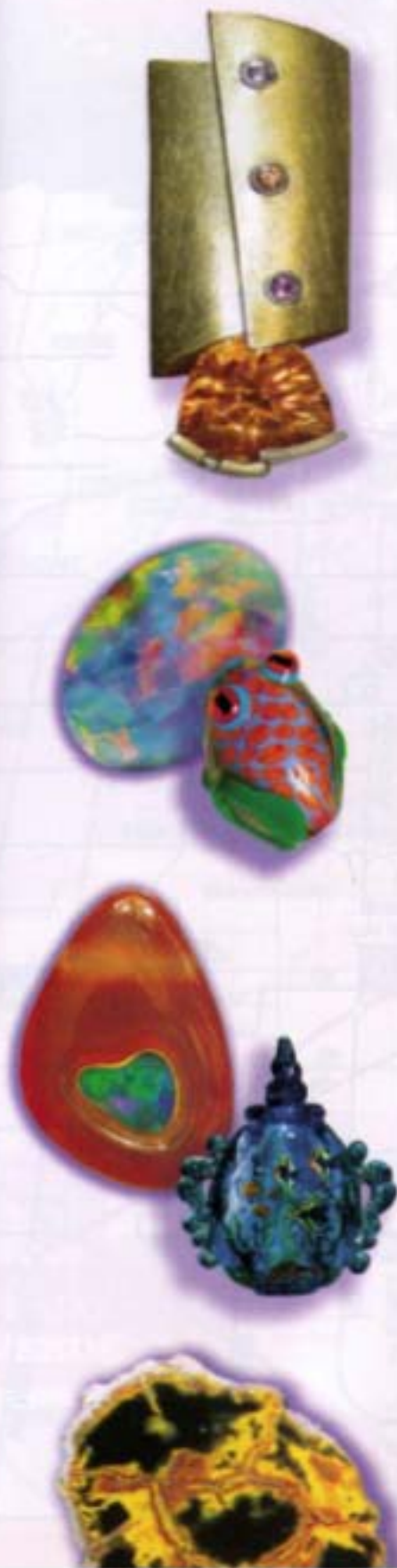
For a list of photographic sources used for the Tucson Show Guide, please refer to page 488.

shows & exhibitors

EXHIBITOR LISTS AND FLOORPLANS

Map Map	132
Shuttles	136
Show Dates	138
1820 ORACLE WHOLESALE SHOW (TOPGEM WAREHOUSE)	
1820 Oracle Wholesale Show	244
A.B.C. DIRECT EAST, A.B.C. Direct	240
A.B.C. DIRECT WEST, A.B.C. Direct	240
AFRICAN ART VILLAGE, African Art Village	229
BEAD RENAISSANCE PRILLION, Bead Renaissance	235
BEST WESTERN EXECUTIVE INN, Executive Inn Mineral & Fossil Show	226
BIGGS GEM CENTRAL, Beauty Gem & Mineral Show	239
CLARION HOTEL/RANDOLPH PARK, Arizona Mineral & Fossil Show	233
DAYS INN/CONVENTION CENTER, Globe-3/Days Inn	220
ECONODOGE, Spectrum of Stones	241
FLAMINGO HOTEL, American Indian Exposition	237
GEM & JEWELRY EXCHANGE, GJK Gem & Jewelry Show	140
GEM MALL, Gem & Lapidary Wholesalers	184
GRANADA AVENUE MINERAL SHOW, Granada Avenue Mineral Show	239
HILTON TUCSON EAST, No Grande Catalog in Motion	232
HOLIDAY INN/HOLIDOME, Gem & Lapidary Wholesalers	165
THE HOTEL ARIZONA (RADISSON CITY CENTER), Worldwide Gem & Jewelry Show	217
HOWARD JOHNSON, AKS Gem Shows	227
INNSUITES HOTEL, Arizona Mineral & Fossil Show	179
JG & M EXPO 2007/MICHIGAN ST., Jewelry, Gem and Mineral Exposition	247
JG & M EXPO 2007/SIMPSON ST., Jewelry, Gem and Mineral Exposition	231
KINO VETERANS MEMORIAL COMMUNITY CENTER, The Best Bead Show	202
LA QUINTA INN (HOLIDAY INN EXPRESS), AKS Gem Shows	222
MANNING HOUSE MANSION, To Bead True Blue	174
MINERAL & FOSSIL CO-OP, Mineral & Fossil Co-op	238
MINERAL & FOSSIL MARKETPLACE, Arizona Mineral & Fossil Show	238
NORCROSS-MADAGASCAR GALLERY, Madagascar Minerals™ Gem Show	236
OMNI TUCSON NATIONAL GOLF RESORT & SPA, Create Your Style With Swarovski	246
QUALITY INN, Arizona Mineral & Fossil Show	225
RAMADA LIMITED, Arizona Mineral & Fossil Show	224
RAPA RIVER, Rapa River Gem & Mineral Show	234
RIVERPARK INN (PUERLO INN), Pueblo Gem & Mineral Show	187
RODEWAY INN/QUALITY INN (GRANT RD), Gem & Lapidary Wholesalers	214
STARR PASS MARRIOTT RESORT & SPA, Gem & Lapidary Dealers Association	205
T REX MUSEUM, T Rex Museum Show	236
TUCSON CONVENTION CENTER, American Gem Trade Association	155
TUCSON CONVENTION CENTER, Tucson Gem and Mineral Show™	177
TUCSON ELECTRIC PARK, Tucson Electric Park Gem & Mineral Show	212
TUCSON ELECTRIC PARK, Tucson Electric Park RV Gem Show	236
TUCSON EXPO CENTER, J.O.G.S. International Exhibits	199
TUCSON SHOWPLACE, Tucson Showplace	241
WESTWARD LOOK RESORT, Tucson Westward Look Mineral Show	237
WINDMILL INN, The Whole Bead Show	230
LOCAL TUCSON SHOWROOMS	247
FIND THE EXHIBITOR INDEX	259

For a list of photograph sources used for this section, please refer to page 498.



Tucson Show Guide Photo Credits

A special thanks to all of the following contributors:

COVER: *clockwise from top left:* Yowah opal, Queensland, Australia, courtesy the Houston Museum of Natural History Collection; photo © Jeff Scovil. Petrified wood; photo by Frank J. Daniels, from *Petrified Wood: The World of Fossilized Wood, Cones, Ferns, and Cycads*, © Western Colorado Publishing Co. 1998. 18K yellow and white gold pendant by Erik Stewart with Starburst-cut citrine by Mark Gronlund. Peridot; photo © AGTA. Carved citrine perfume bottle with blue topaz stopper by Wobito Gems Ltd.; photo © Jeff Scovil. An *Aquarium* scent bottle by Pati Walton. Pendant with boulder opal set in Mexican jelly opal by Kreg Scully; photo by Kreg Scully. Lampworked glass frog bead from Sage; photo © Donna H. Chiarelli. Opal; photo © AGTA.

TABLE OF CONTENTS: *clockwise from top left:* peridot; photo © AGTA. 18K yellow and white gold pendant by Erik Stewart with Starburst-cut citrine by Mark Gronlund. Carved citrine perfume bottle with blue topaz stopper by Wobito Gems Ltd.; photo © Jeff Scovil. An *Aquarium* scent bottle by Pati Walton. Petrified wood; photo by Frank J. Daniels, from *Petrified Wood: The World of Fossilized Wood, Cones, Ferns, and Cycads*, © Western Colorado Publishing Co. 1998.

SHOWS AND EXHIBITORS: p. 131, *from top to bottom:* 18K yellow and white gold pendant by Erik Stewart with Starburst-cut citrine by Mark Gronlund; opal, photo © AGTA; lampworked glass frog bead from Sage, photo © Donna H. Chiarelli; pendant with boulder opal set in Mexican jelly opal by Kreg Scully, photo by Kreg Scully; *Aquarium* scent bottle by Pati Walton; petrified wood, photo by Frank J. Daniels, from *Petrified Wood: The World of Fossilized Wood, Cones, Ferns, and Cycads*, © Western Colorado Publishing Co. 1998.; p. 140, cushion-cut amethyst courtesy Philip Zahm & Associates, photo © Lee-Carraher Photography; p. 155, *Optic Dish* ametrine cut by Michael Dyber; photo courtesy Michael Dyber; p. 165, opal courtesy Philip Zahm & Associates, photo © Lee-Carraher Photography; p. 174, *Thought Virus* lampworked and enamel bead by Diana East; p. 177, oval yellow sapphire, photo © Lee-Carraher Photography; p. 179, agate, photo © Jeff Scovil; p. 184, a 64.57-ct. Pakistani peridot, courtesy Shades of the Earth, photo © Jeff Scovil; p. 187, tourmaline and moonstone pin/pendant from Charles Lewton-Brain, photo © Charles Lewton-Brain; p. 199, *Kodama* brooch with fossilized palmwood, tourmaline, and peridot from Yumi Ueno, photo by Hiro Ueno; p. 202, vessel bead by Stevi Belle, photo by Andrew Kingsbury; p. 205, Mexican fire opal from Lance Kanaby, photo © Jeff Scovil; p. 212, brooch of Lobo agate, golden agate, and carved 18K gold from Tom Herman, photo © Ralph Gabriner; p. 214, 71-ct. arrowhead citrine from Mark Gronlund, photo © Tino Hammid; p. 217, a 3.27-ct. spessartite garnet pentagon cut by Larry Winn; p. 220, quartz, photo © Jeff Scovil; p. 222, gold earring with boulder opal, lapis, and tourmaline from Jennifer Kalled, photo © Ralph Gabriner; p. 224, *Jungle Flame* 18K gold Brazilian opal

and chrysocolla perfume bottle by Gil Roberts, photo © Jeff Scovil; p. 225, Yowah opal, Queensland, Australia, courtesy the Houston Museum of Natural History Collection; photo © Jeff Scovil; p. 226, 16.17-ct. Australian opal doublet, courtesy Robyn Dufty, photo © Lee-Carraher Photography; p. 227, agate and gold brooch from Tom Herman, photo © Ralph Gabriner; p. 229, beaded African sculpture, photo by Kevin Myers; p. 230, *Tidepool* lampworked bead from Kate Drew-Wilkinson, photo by Sandy Upson; p. 231, opal, onyx, and 18K gold pin from Rob Greene, photo by Glenn Moody; p. 232, Kentucky agate, onyx, and 18K gold brooch from Rob Greene, photo by Glenn Moody; p. 233, black onyx with citrine inset by Steve Walters, photo © Lee-Carraher Photography; p. 234, cabochon of Finnish labradorite from David Vance Horste, photo © D. Yapple Photography; p. 235, Lampworked and faceted bead by Lauri Copeland, photo by Frank DeSantis; p. 236, *from top to bottom:* zoisite (tanzanite) crystal, courtesy Barker & Co., photo © Jeff Scovil; amber specimen from the Chiapas mines, photo © Pat Craig; p. 237, *from top to bottom:* split-sided triangle peridot from John Rhoads, photo © Tino Hammid; silver and fossil walrus tusk pin/pendant from Jenny Byrne, photo © Ralph Gabriner; p. 238, *from top to bottom:* malachite, photo © Jeff Scovil; elbaite and quartz crystals from the Santa Rosa mine, courtesy Irv Brown, photo © Jeff Scovil; p. 239, *from top to bottom:* agate, photo © Jeff Scovil; blue chalcidony from Mt. Airy, photo © Chris Rose; p. 240, *from top to bottom:* sterling silver, gold boulder opal, and turquoise brooch from Andy Cooperman, photo © D. Yapple Photography; *Faces-in-Flowers* glass bead by Nancy Pilgrim/Fantasy Beads, photo by Nancy Pilgrim; p. 241, *from top to bottom:* quartz with hematite inclusions from Wydar Co., photo © Jeff Scovil; opal, photo © AGTA; p. 244, *from top to bottom:* petrified wood, photo by Frank J. Daniels, from *Petrified Wood: The World of Fossilized Wood, Cones, Ferns, and Cycads*, © Western Colorado Publishing Co. 1998; Australian boulder opal, photo courtesy Robert Shapiro; p. 246, African aquamarine cut by Mark Gronlund, photo by John Parrish; p. 247, *from top to bottom:* carved citrine perfume bottle with blue topaz stopper by Wobito Gems Ltd., photo © Jeff Scovil; wulfenite specimen, courtesy Wayne Thompson Minerals, photo © Jeff Scovil.

FIND THE EXHIBITOR: p. 259, *from left to right:* blue sapphire; photo © AGTA. Pendant with boulder opal set in Mexican jelly opal by Kreg Scully; photo by Kreg Scully.

INDEXES: p. 355, *clockwise from top right:* 14K gold pendant with carved chalcidony, pearl, peridot, and diamond by Patrick Murphy of Murphy Design. Opal; photo © AGTA. Lampworked glass frog bead from Sage; photo © Donna H. Chiarelli. Pendant with boulder opal set in Mexican jelly opal by Kreg Scully; photo by Kreg Scully. A crocoite specimen from the Premiere Pocket of the Adelaide Mine in Tasmania; photo by Adam Wright/The Adelaide Mining Company Pty. Ltd.